



Riding the Trail

Call 027 241 0858

www.aroundthemountaincycling.nz

info@atmtrail.co.nz

Ranges from single day to 5 day rides

Graded 1 (Easy) to 3 (Intermediate)

Can be ridden in either direction

Open year round

Packages, bike hire and shuttles available

TRANSPORT DETAILS

BOAT TRANSPORT



Spirit of Queenstown
Transports ebikes and mountain bikes

The Explorer & TSS Earnslaw
Transports mountain bikes only (no ebikes)

Barge Boat
Transports ebikes and mountain bikes

SHERPA SHUTTLE TRANSPORT



- 1 Between Mavora Lakes & Centre Hill
- 2 Between Centre Hill & Te Anau
- 3 Between Centre Hill and Mossburn/Lumsden
- 4 Between Kingston & Queenstown

MAP KEY

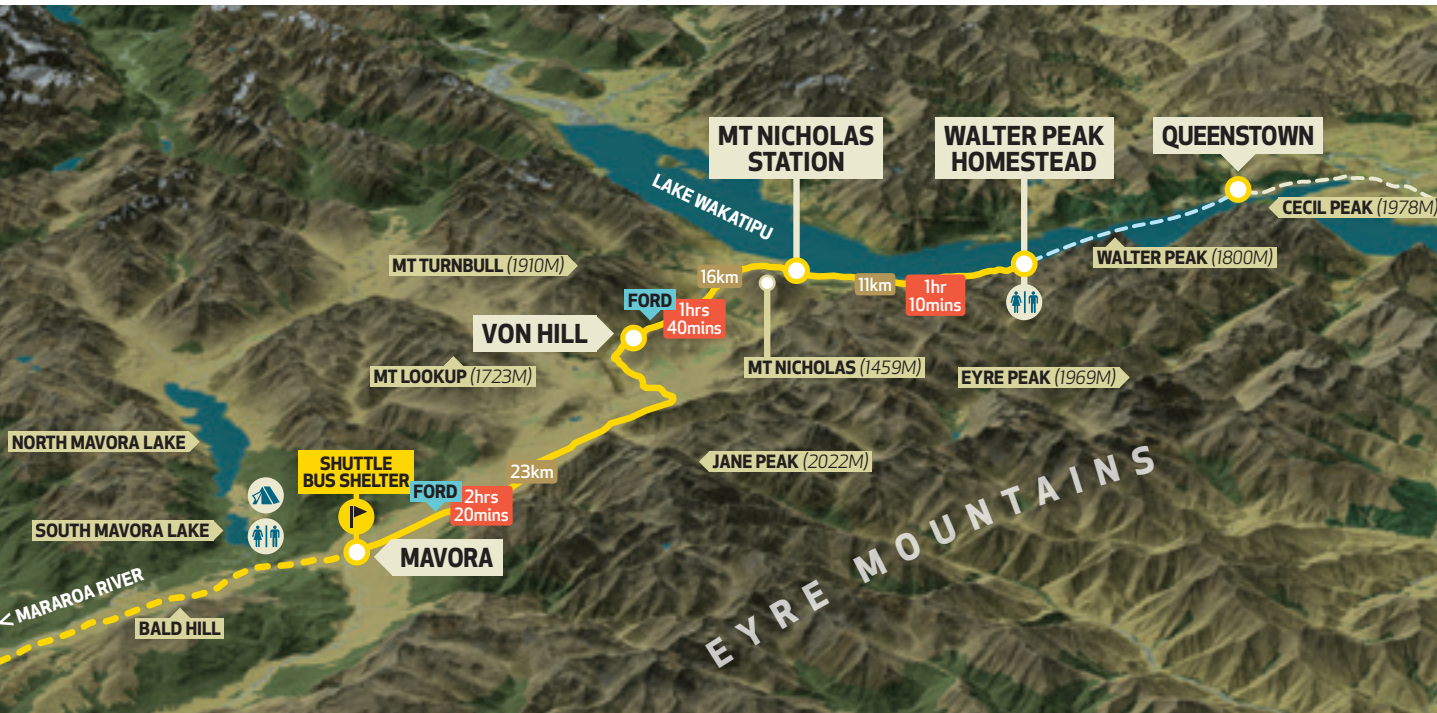
- Around The Mountain Cycle Trail
- Distance between two points
- Time between two points (at an average riding speed of 10km/hr)
- Lake Wakatipu Cruise
- Toilets
- Pub/Beverages
- Coffee
- Accommodation
- Food
- Camping



Walter Peak to Centre Hill

via Mavora Lakes

Ride through stunning backcountry and the foothills of the Eyre Mountains



Walter Peak to Mavora Lakes - 50km



At Queenstown you board the boat to cruise across Lake Wakatipu to Walter Peak.

Starting your ride at Walter Peak Station and passing the Mt Nicholas Station, the trail travels through the show stopping Von Valley/River. Mt Nicholas Station was the first station to supply "Ice Breaker" merino wool.

Crossing the bridge at Black Spur Creek and ford at the Gorge Burn, the trail follows the beautiful, natural tussock valley along Mt Nicholas Road.

Mavora Lakes to Centre Hill - 35km

Cyclists have two options from Mavora Lakes to Centre Hill - a shuttle bus or cycle Centre Hill Rd.

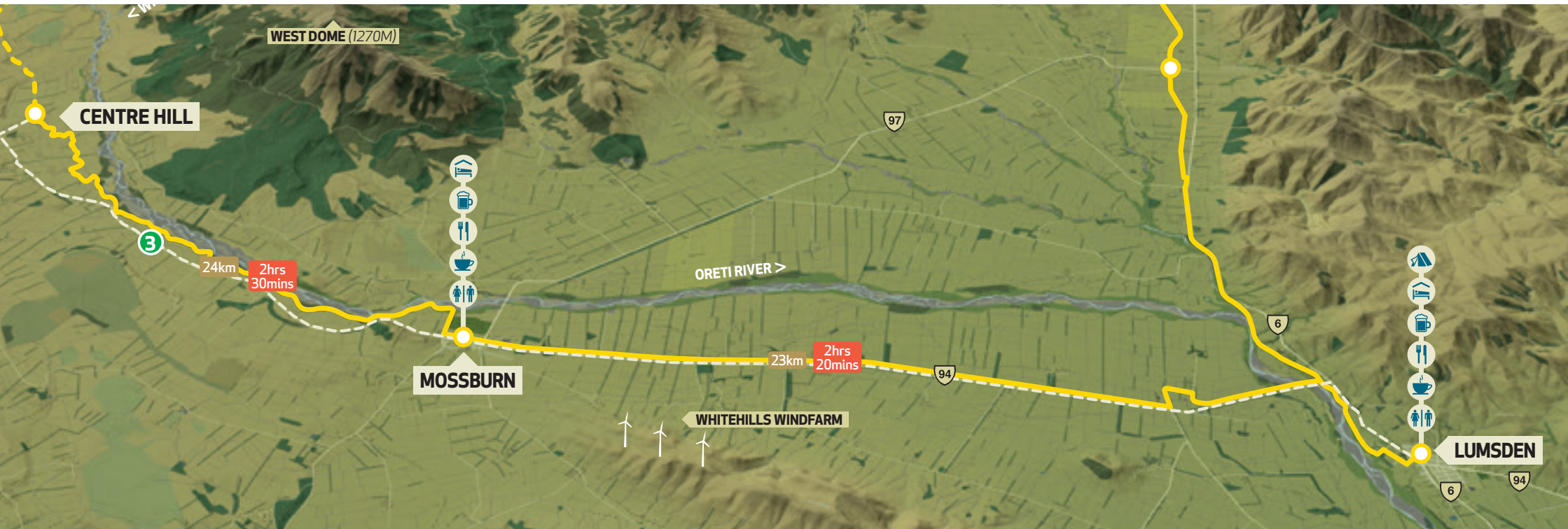
This gravel road section can be dusty and bumpy in summer due to increased traffic, so most riders choose to shuttle this section. We pick you up at Mavora, transfer you to your accommodation, and return you to Centre Hill the next day so you can continue the ride.

If taking the shuttle bus preference, please note you must book in advance.

Centre Hill to Lumsden

via Mossburn

*A relaxing ride through
idyllic pastures and rich
farmland*



Centre Hill to Lumsden - 43km



Centre Hill to Mossburn

From The Eyre Mountains Conservation Park the trail passes the Oreti River and meanders along the side of Starvation Creek, travelling between farms and the Oreti River as it comes back into Mossburn.

Mossburn to Lumsden

The trail leads you from Mossburn, which in the 1970's was named the deer capital of New Zealand, back towards Lumsden. This section is 5 km on old railway line and 10 km beside the State Highway and farm paddocks. Then it's over the Oreti Mossburn Bridge and along the flood banks into Lumsden.



Lumsden to Kingston

via Five Rivers, Athol & Garston

Experience the charm
of Northern Southland's
country towns



Lumsden to Athol - 35km



Lumsden to Five Rivers

Starting in Lumsden, enjoy the relics of the steam train era around the old local railway station. The trail from Lumsden to Five Rivers is slightly uphill and passes through rich farm lands and by the banks of the Oreti River, another great river to spot the brown trout sunning themselves.

Five Rivers to Athol

Along this section of the trail you predominately ride on the old railway line, encompassing panoramic views of Mid Dome, a prominent Northern Southland mountain, and the surrounding mountains before reaching Five Rivers.

Stop in Athol for a drink and a bite to eat at the Athol Shop, famous for its slow BBQ meats, or the Hari Puku Food Truck.

Athol to Kingston - 30km



Athol to Garston

The cycle trail from here has been constructed on an old disused railway line.

The trail crosses the Mataura River along the way where there are two cycle suspension bridges which are 67m and 92m in length. The locals have named them Athol's Golden Gates. Looking over the bridge you can often see brown trout swimming around in the pristine, crystal clear waters.

Garston has reinvented itself with a mobile café called the Air Stream, a honey shop and is also home to two small, attractive, historic churches.

Garston to Kingston

From Garston the trail crosses the Mataura River on a suspension Bridge, past old stone ruins of the area's original stone homestead, and past formations of the glacier moraine at the foot of the Eyre Mountains.

From here you ride into Kingston, a small town on the southern edge of Lake Wakatipu. Kingston has two cafes, a camping ground, a number of B&B lodges and is home to the historic steam train the Kingston Flyer.

Take a shuttle bus from Kingston to Queenstown to finish your Around the Mountains adventure.